

# investing in you

fleet golf master brochure



## INSIDE

- 3 **Tempo™**
- 5 **Tempo Walk**
- 7 **Club Car Connectivity**
- 11 **Carryall**
- 13 **Café Express**
- 14 **Range Picker**





# hitting the long ball

It's no secret that golf is changing. And while traditions will always matter, you need new tools to grow your business and attract today's players to your course.

Club Car has the industry-leading products, revenue-building strategies, and forward-thinking technology to help you create stronger relationships with your golfers and more efficiently manage your course.

It starts with the Tempo lineup: our uniquely designed golf carts deliver quality engineering, automotive styling, and connected technology for an enhanced ride golfers won't get anywhere else.

For mobile course and fleet management, Club Car Connect offers web-based cart tracking, car control, pace-of-play alerts, and more. Coupled with Shark Experience—a one-of-a-kind touchscreen entertainment system—our connectivity package is a course differentiator that will drive your success now and in the future. These are just a few of the ways Club Car is continually investing in you.



# advance the ride and your reputation

## made for modern golf

The award-winning Tempo continues to exceed industry expectations, delivering a smooth, comfortable ride and connected touchscreen technology no other golf cart can match. With a distinctive design and golfer-first features, it's available in two passenger models, with a gas engine, standard FLA batteries, or an energy-saving Lithium Ion battery—and can be endlessly customized to suit your course's needs.

Touchscreen and speakers included on electric Tempos with Shark Experience

Premium comfort seats

Spacious dashboard

## tempo li-ion

Built for efficiency

ClubCar

Distinctive, modern automotive styling

Sleek alloy wheels



## BEST-IN-CLASS RANGE

with zero maintenance  
battery

# the lithium ion difference

High performing and packed with the latest technology, our Lithium Ion golf carts save time, increase cart reliability, and conserve energy to improve the overall performance of operations. When it's time to power up, the fast charging times and ability to hold a charge across multiple rounds keep Lithium Ion-powered carts on the course and out of the barn.

## features and benefits

- Zero maintenance battery
- Set and Forget Extended Storage
- Over-the-air (OTA) updates maximize efficiency and minimize course downtime when you upgrade the cart performance with Tempo Connect.
- Vehicle Control Module (VCM) increase vehicle uptime and reduce labor time. Real time health status of vehicle helps identify issues before they arise.
- Handheld Bluetooth® Diagnostic Tool maximizes vehicle up time. Quick serviceability keeps your fleet running by analyzing and configuring all electrical subsystems with one simple tool.



Rust-proof  
aluminum frame

*Optional equipment shown.*

*More accessories available. Ask your Club Car sales representative for details.*



# step up your game

Tempo™ Walk is an autonomous caddie that gives golfers a new way to experience the game on your course. It won't replace your existing caddie and cart programs—it supplements them as an "anytime caddie."

Once golfers try Tempo Walk, you'll see a renewed excitement along the fairway. Now your guests can focus on smooth shots, see improved rounds, and relax while outdoors.

**Tempo** WALK







**DID YOU KNOW?**  
golfers burn over  
1,000 calories walking  
18 holes

### new revenue stream

Tempo Walk is a rewarding way to build new relationships with golfers, generate excitement, and maintain pace of play.



### imagine, you could help golfers:

- Get more exercise
- Further appreciate the natural beauty of your course
- Improve their overall golf game
- Increase their enjoyment at the course
- Increase their spending at the course



Runs on state-of-the-art wireless technology controller with improved waterproofing

Improved tablet design gives golfers precise GPS yardage to-the-pin

Improved obstacle avoidance system with enhanced messaging and audible alerts for easy maintenance

Lithium Ion battery powers 36 holes of play with improved energy management

Amenities include cooler, cup holder, USB port, and divot sand bottle

Aluminum frame



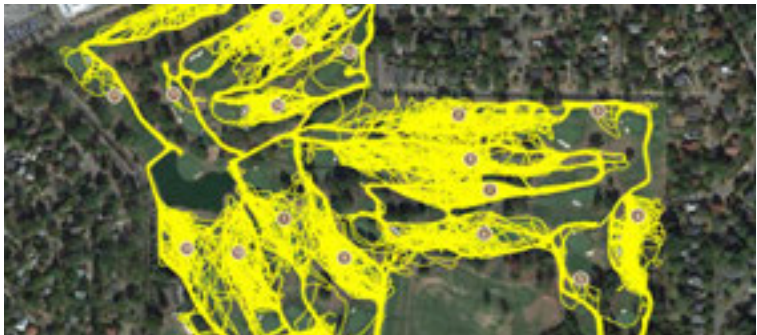


## FLEET MANAGEMENT

# control costs. simplify operations. win-win.



Maximize course efficiencies and fleet performance with the Visage™ Fleet Management system. Offered exclusively by Club Car and installed at over 1,000 courses worldwide, Visage is a proven technology system designed to strengthen your bottom line. Use it to increase revenue, efficiently manage resources, and accent a golfer's experience.



Heat map of a course before Car Control's cart path implemented.



Heat map of a course after Car Control's cart path implemented.

**“We’re saving \$75,000 to \$100,000 because of the control we now have over our fleet.”**

– Shane Dysert, Director, Golf Club Operations, Bear Mountain Resort

### communicate

Free up staff by sending weather alerts, tournament details, and clubhouse specials directly to carts.

### improve

Track carts in real time and send alerts to maintain pace of play, then use cart data to design course changes that benefit both golfers and staff.

### preserve

Keep the course pristine by automatically slowing carts that come too close to pre-set restricted zones.

### support

Count on industry-leading customer service professionals to help you optimize course operations and troubleshoot your system.



# play like a shark.

Shark Experience, the premier in-cart, on-course entertainment and communication system, is changing the game for those on the green and their companions. Through touchscreen technology, it engages golfers in a modern, fun, and social way that they'll talk about long after the last putt has dropped. There's also an all-new user experience with updated content to change the game for your golfers.

## SHARK EXPERIENCE

presented by **verizon**



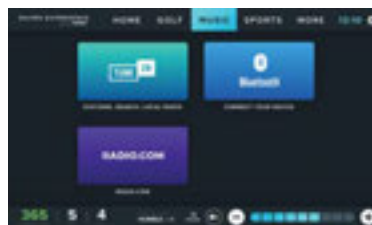
### dynamic GPS yardage

- Golfer Experience delivers hole overviews and touch for distance yardage (pins, hazards, and points of interest)
- Show/Hide Drive Distance & Approach View
- Maximize Hole View Button



### music/sports

- Golfers can enjoy music on the course through Bluetooth connectivity or streaming radio from Audacy or TuneIn Radio
- Your players can catch a game from the links thanks to access to live sports, highlights, and more



### video on-demand

- Golf Tips from Greg Norman
- Engaging videos from Atmosphere TV





## CLUB CAR CONNECT OFFERING

Building the technology package that is tailored to your club's needs is as easy as 1-2-3. It starts with acquiring your touchscreen monitor and integrated mounting console. From there, you have the option to include one of two in-car entertainment options—either Shark Experience or Bluetooth Speakers only. To complete your connectivity solution, the final step is to choose one or more Visage Fleet Management modules.

### club car connect



- 10" VDU
- Integrated mounting console with overhead storage baskets
- Standard Connectivity Module
- Choice of one Module\*
  - Golfer experience
  - Car tracking
  - Car control

### shark experience



- 10" VDU
- Integrated mounting console
- Standard Connectivity Module
- Golfer experience\*
- Bluetooth speakers
- Music streaming from Audacy and TuneIn Radio
- PGA Tour Leaderboard
- Sports Ticker and Gaming Stats
- Greg Norman Golf Tips
- Videos from Atmosphere TV

### bluetooth only



- 10" VDU
- Integrated mounting console with Bluetooth speakers
- Standard Connectivity Module
- Golfer experience\*
- Bluetooth pairing functionality

*\*Additional Visage Fleet Modules contracted separately*

**standard features:** 10" Video Display Unit, system installation, course mapping, and staff training provided free of charge. Access to Visage Control Center (VCC), hole overviews, and electronic info display.

**sponsored content:** Shark Experience programming includes sponsored content.

**program requirements:** 40-cart fleet minimum; subject to verification of 4G LTE coverage. Execution of a 4-year License and Service Agreement for use of service and system.





## FLEET MANAGEMENT MODULES

### power

- Real-time battery status
- On-charge status
- Low-battery notifications
- Fault-code notifications
- Odometer
- Amp-hours reporting
- Charge faults/interrupts

### car tracking

- Real-time vehicle position
- Pace-of-play reporting
- Vehicle drive history
- Find cart
- Real-time messaging
- Marshall Mode

### cart control

- Action-zone speed control
- Action-zone messaging
- Action-zone visibility to the golfer (on screen)
- Fleet lockdown
- Geofence
- Cart path only
- Anti-tamper
- Set vehicle top speed
- Notifications
- Vehicle drive history

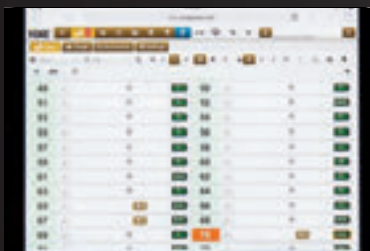
### tournament connect

- Golf Genius Integration
- Viper Golf Integration

### advertising

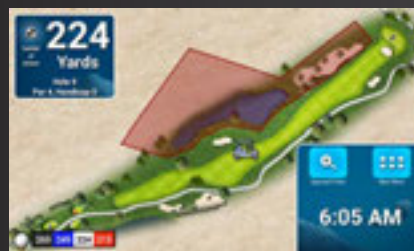
- AdMan Pro

protect your assets. **improve your bottom line.**



### manage assets

With real-time reporting, you'll know when a cart needs a charge or has a service issue before it happens.



### reduce expenses

Carts can be placed under speed controls, regulated to cart paths, and monitored to ensure pace of play.



### increase revenue

Target golfers with daily and seasonal specials and even allow them to place orders from anywhere.

# ready for **the long haul**

the multi-tasking, reliable Carryall  
with superb maneuverability





## the superintendent's turf vehicle

Designed with input from 400 superintendents, the Carryall 502 has the features you need most, like a high-visibility dash and low ground clearance.



## the only rust-proof frame in the industry

Constructed to resist rust and corrosion in salty, humid environments, our aluminum frame is three times stronger than comparable steel models.

## tighter handling, lower clearance

Optional Small Wheel Turf Package (available on 300, 500, and 700 models) features 18" wheels, allowing a smaller turn radius and more comfortable ride.

## electric or gas powertrain

Choose the engine that's best for your course: our 8-volt lead acid battery with E.R.I.C. high frequency charger or our powerful gas engine.

## multiple models, increasing payloads

With five Carryalls ranging from 800 to 1500 lbs. of capacity, you can choose the power, bed size, and integrated accessories needed for your operations.

# on-the-go-refreshments. instant revenue.

the Café Express delivers the goods.



With display space that's been carefully designed and engineered to drive impulse buys, the Café Express mobile merchandising vehicle will help you recognize more revenue and higher profits. Stainless steel exteriors offer enhanced durability and a presentable finish.

## display to win

Flexible shelving shows off snacks while insulated compartments keep more drinks cold. (It holds up to 256 cans!)

## put it on ice

The redesigned Café Express has 120% greater consumable ice capacity (which means fewer trips back to the clubhouse).

## save on fuel

Its super-efficient, 14-hp rated EFI engine consumes 50% less fuel than similar models.

## free staff training

Club Car offers a free training module with a certification exam to anyone who will operate this vehicle. It's a great way to increase customer service and protect your staff, your golfers, and your investment.





## get the scoop: **one package does it all.**

care for your course with the complete Range Picker Package.

You no longer have to “build your own” vehicle, because the new Club Car Range Picker Package for Carryall 300 and 500 gasoline models has everything you need.

### available features:

- Automated limited-slip differential
- Extra traction tires for wet, slippery, or rough terrain
- Range cab
- Push frame
- Front-picker adapter
- Brushguard with headlight guards
- Cargo box
- Four standard body colors
- Five premium body colors
- Two standard seat color
- Front-picker adapter
- Three premium seat colors

